

UWELL

Manufactured by SHENZHEN UWELL TECHNOLOGY CO., LTD.

©2021 By SHENZHEN UWELL TECHNOLOGY CO., LTD., All Rights Reserved.
Designed by UWELL Made in China

www.myuwell.com



Uwelltech



Uwelltech



Uwelltech



Uwelltech

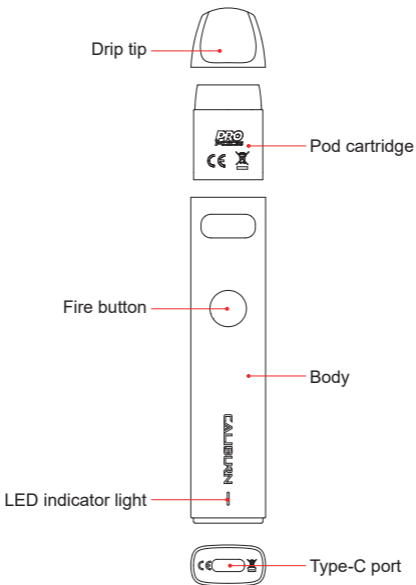


Uwell

CALIBURN

CALIBURN A2 Pod System
User Manual

Illustration



Please read the following information before use:

1. Insert the pod into the device first then remove the drip tip.
2. Instill through e-liquid inlet, cap the pod with drip tip and wait for 10 minutes.
3. Press the fire button 5 times to turn it on, and you can vape directly or press the fire button to vape.



Draw or button
vape



Top fill



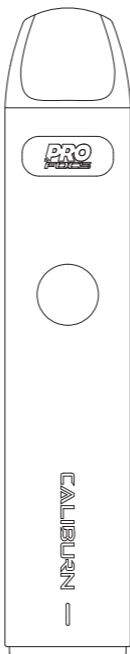
Authentic flavor



Meshed-coil



E-liquid check



Type-C port

Specification

- Material: PA, Aluminum Alloy
- Size: 110.1 mm × 21.3 mm × 11.7 mm
- Net Weight: 31 g
- E-Liquid Capacity: 2 ml
- Output Wattage: 15 W
- Battery Capacity: 520 mAh
- Pod cartridge specifications:
FeCrAl UN2 Meshed-H 0.9Ω CALIBURN A2 Refillable Pod

The Packaging Includes

- 1 × CALIBURN A2 Pod System
- 1 × UN2 Meshed-H 0.9Ω CALIBURN A2 Refillable Pod
(Pre-installed)
- 1 × UN2 Meshed-H 0.9Ω CALIBURN A2 Refillable Pod
(Spare)
- 1 × User's manual

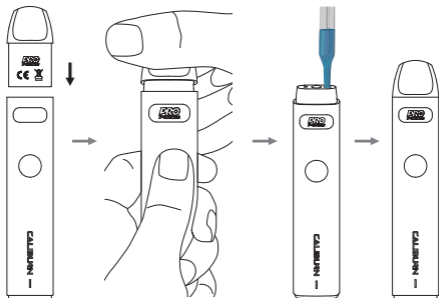
Features

1. Vape with either drawing or button.
2. Press 5 times within 2 seconds to activate/deactivate.
3. Open system is a cost-effective option.
4. It is quick and convenient to fill from the top.
5. The Uwell Pro-FOCS technology ensures an authentic flavour of the e-liquid.
6. The chip-set inside functions a multiple circuit protection, providing a stable, safe and reliable output.
7. Concise and fashionable shape provides a unique grip.
8. With constant voltage output mode, taste is more stable.

Instructions

1. How to fill the pod

- Insert the pod cartridge into the body.
- Take out the drip tip.
- Fill with e-liquid.
- Cap the pod with the drip tip.



Attention

- When filling the e-liquid, please fill through filling port rather than the airway in the middle.
- Do not leave the filling port open. After filling, please cap the pod with drip tip to prevent e-liquid leakage.
- To avoid dry-burning and damaging the coil, please wait for 10 minutes after the first e-liquid top-up.
- Please refill immediately when e-liquid level reaches the "MIN" mark.

2. Start/Stop

Press the fire button 5 times consecutively within 2 seconds to turn on/off, and the LED indicator light will flash 3 times to signal.

3. Vaping

When the device is on, it can be fired by drawing or pressing the fire button, and the LED indicators will be on while the device is working. The maximum working time is 8 seconds with each draw as a protection. In the case of exceeding 8 seconds of continuous drawing, the device will cease working, while the LED indicators will flash in green 5 times as a prompt.

4. Instructions for replacement of pod cartridge

- a. Take out the old pod cartridge from the body and insert a new one.
- b. To avoid dry-burning and damaging to the coil, please wait for 10 minutes after the first e-liquid top-up.

5. Battery indication function

The LED will flash green to signal the remaining battery capacity is over 60%; blue to signal 30%-60%; red to signal below 30%; 10 times of red flashes upon battery depletion.

6. Short circuit protection

In the case of short-circuit, the indicators will flash red 3 times and stop working.

7. Low voltage protection

The indicators will flash red 10 times and stop working if the battery is depleted.

8. Timeout protection

The maximum working time is 8 seconds with each draw as a protection. In the case of exceeding 8 seconds of continuous drawing, the device will cease working, while the LED indicators will flash in green 5 times as a prompt.

9. Open circuit prompt

When the pod cartridge is not properly connected or not connected, the LED indicators will flash blue 3 times to signal open circuit.

10. Charging

While charging, the indicators will flash to signal power level: green to signal battery level is charged over 60%; blue to signal 30%-60%; red to signal below 30%; indicators will stay on upon charge completion.

Attention

1. Please charge with certified high-quality adaptor from a reputable company and a Type-C cable with the charging current of 5V/1A.
2. The device and adaptor may warm up when charging, keep away from flammable and explosive goods.
3. Please use a dry and soft cloth to clean the device. Keep away from water or any liquids.
4. Please remove the pod cartridge and store it separately when you are on a plane to avoid leakage due to pressure changes.
5. Please do not put the device in your pocket with other hard objects to avoid damages.
6. Please turn off the device when it is not in use.
7. Please charge the device at least once a month.
8. Don't disassemble the device.

9. Avoid high temperature, low temperature and humidity during use or storage to avoid damage to the equipment.
10. The product parameters or pictures in this manual are for illustration purpose only, please refer to the actual product.

Safety Instruction

Please read the following safety instructions carefully before using the product.

1. This product is only available to people who have reached the legal age of smoking. It is strictly forbidden for young children, pregnant women and women during breastfeeding or for patients with heart disease, high blood pressure, diabetes, depression and asthma.
2. Please put the product out of reach of children and pets to avoid injury.
3. When using this product, please keep away from inflammable and explosive materials to avoid injury.
4. The company does not assume any responsibility for any equipment damage or personal injury caused by user misuse.

Warranty Details

Please keep the anti-counterfeit code and proof of purchase after purchasing the product. The warranty period is 180 days from the date of purchase. Our company provides warranty service (Device and atomizer only, exclude coil head and pod cartridge).

Please note that any of the following conditions are not covered by the warranty:

1. Exceeding the warranty period.
2. Damage caused by the use, maintenance, and storage that is not in accordance with the requirements as instructed.

3. Damage caused by unauthorized repair.
4. Damage caused by the usage of non-UWELL components.
5. Damage caused by force majeure.

Verification

1. Visit the UWELL official website www.myuwell.com through a smartphone or PC.
2. Please enter the 16 digits authentic code, and the result will be displayed in a few seconds.
3. Please feel free to contact UWELL via e-mail, phone or website for more help.

Customer Service

We pride ourselves in manufacturing quality products and providing excellent customer service. For any issues, please contact us at service@myuwell.com.

* UWELL reserves the right of final interpretation of the user manual.

* It is hereby stated that the markable area on the product is not enough to mark the CE and WEEE as the standard dimensions.